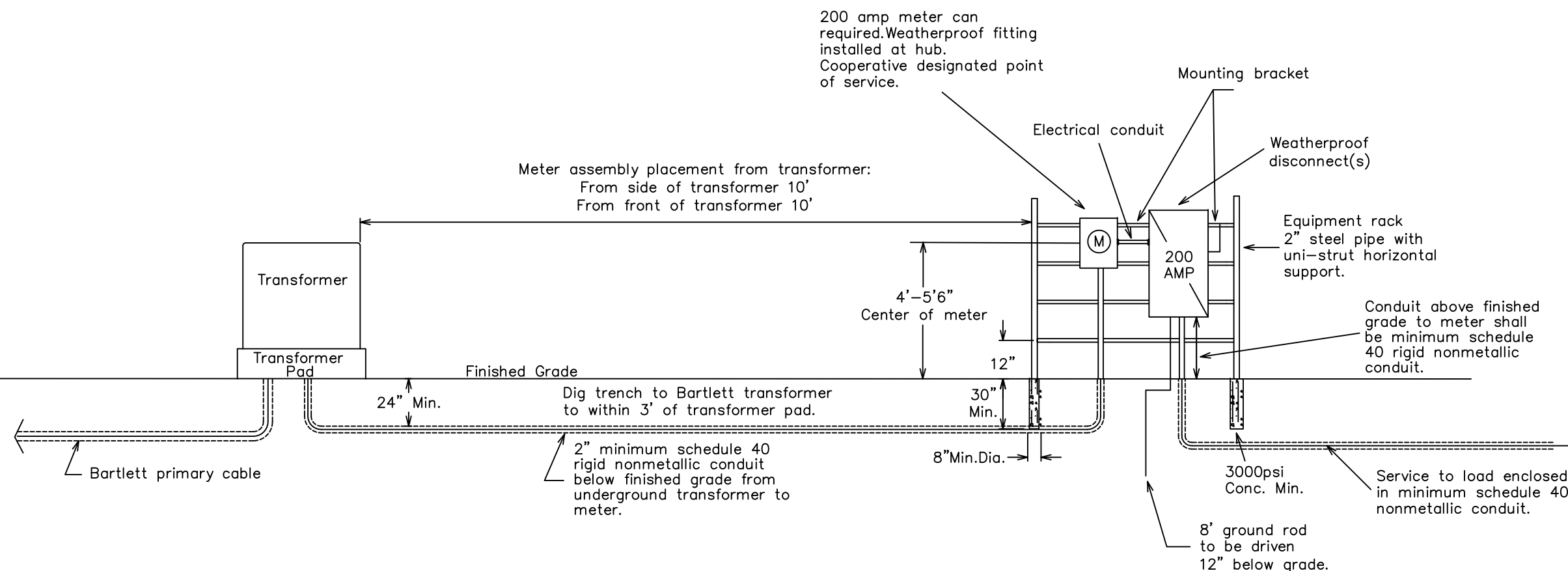


NOTES:

1. Weatherproof fittings required.
2. Wire sized to total disconnect size.
3. Neutral may only be reduced one size on residential application. No reduction of the neutral is allowed on commercial application.
4. Notify Bartlett Electric Cooperative office when meter assembly is complete.
5. Bartlett will provide conduit and wire from transformer into meter assembly.



FOR THE MEMBER'S SAFETY,
WIRING INSTALLATIONS SHALL
CONFORM TO THE REQUIREMENTS
OF THE NEC AND NESC.



BEC Power
27492 HWY 95
Bartlett, Texas 76511

**1Ø, 200 AMP URD SERVICE
ON RACK WITH CLASS 200
METER SOCKET**

Drawn By: SEP	Checked By: GP	Approved By: KGS	Revised by: SE
Scale: N.T.S.	Date: 08-03-21	Drawing #: BEC-MS-11	Date: 08-03-21