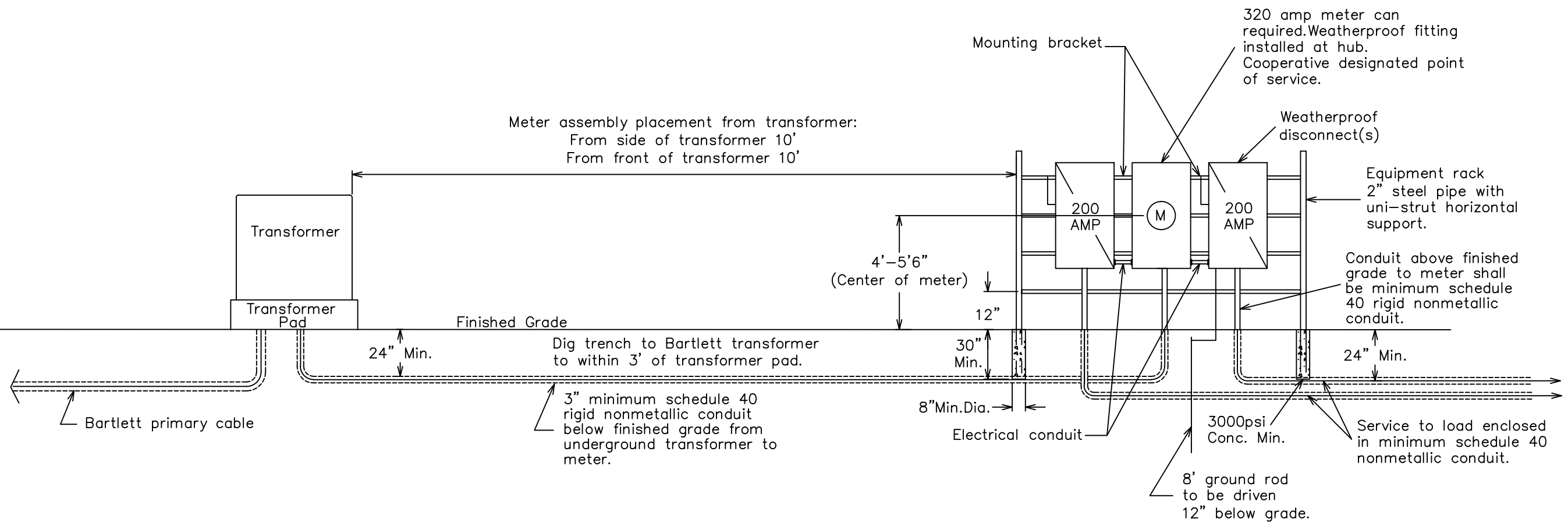


NOTES:

1. Main disconnect panel may not be used as an electrical race way.
2. Line taps shall be made by the electrical contractor if a galvanized wiring trough is used.
3. Weatherproof fittings required.
4. Two (2) disconnects can be substituted with (1) fused disconnect.
5. Wire sized to total disconnect(s) size.
6. Neutral(s) may only be reduced one size on residential application. No reduction of the neutral(s) is allowed on commercial application.
7. Notify Bartlett Electric Cooperative office when meter assembly is complete.
8. Bartlett will provide conduit and wire from transformer into meter assembly.



FOR THE MEMBER'S SAFETY,
WIRING INSTALLATIONS SHALL
CONFORM TO THE REQUIREMENTS
OF THE NEC AND NESC.

Bartlett Electric Cooperative, Inc.
P.O. Box 200
Bartlett, Texas 76511

1Ø, 320 AMP URD SERVICE
ON RACK WITH CLASS 320
AMP METER SOCKET

Drawn By: SKS	Checked By: GP	Approved By: KGS	Revised by: MEI
Scale: N.T.S.	Date: 07-24-07	Drawing #: BEC-MS-4	Date: 09-08-14