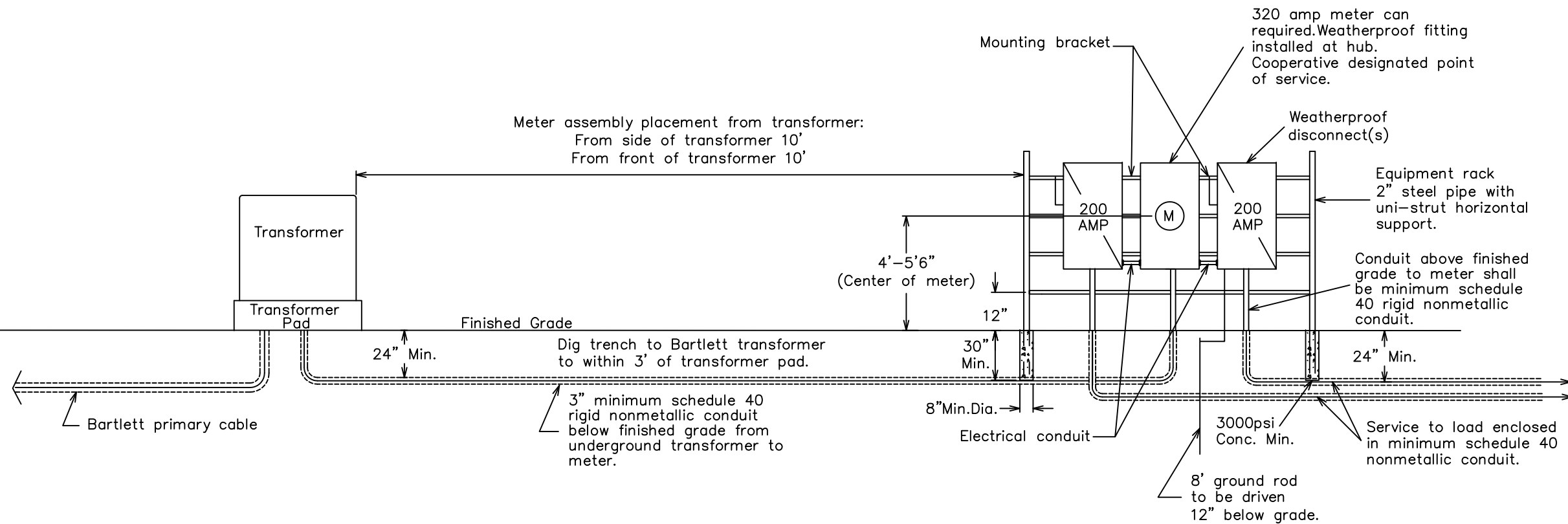


NOTES:

1. Main disconnect panel may not be used as an electrical race way.
2. Line taps shall be made by the electrical contractor if a galvanized wiring trough is used.
3. Weatherproof fittings required.
4. Two (2) disconnects can be substituted with (1) fused disconnect.
5. Wire sized to total disconnect(s) size.
6. Neutral(s) may only be reduced one size on residential application. No reduction of the neutral(s) is allowed on commercial application.
7. Notify Bartlett Electric Cooperative office when meter assembly is complete.
8. Bartlett will provide conduit and wire from transformer into meter assembly.



FOR THE MEMBER'S SAFETY,
WIRING INSTALLATIONS SHALL
CONFORM TO THE REQUIREMENTS
OF THE NEC AND NESC.



BEC Power
27492 HWY 95
Bartlett, Texas 76511

1Ø, 320 AMP URD SERVICE ON A
RACK WITH CLASS 320 METER
SOCKET, 1 OR 2 DISCONNECTS

Drawn By: SEP	Checked By: GP	Approved By: KGS	Revised by: SE
Scale: N.T.S.	Date: 07-26-21	Drawing #: BEC-MS-4	Date: 07-26-21