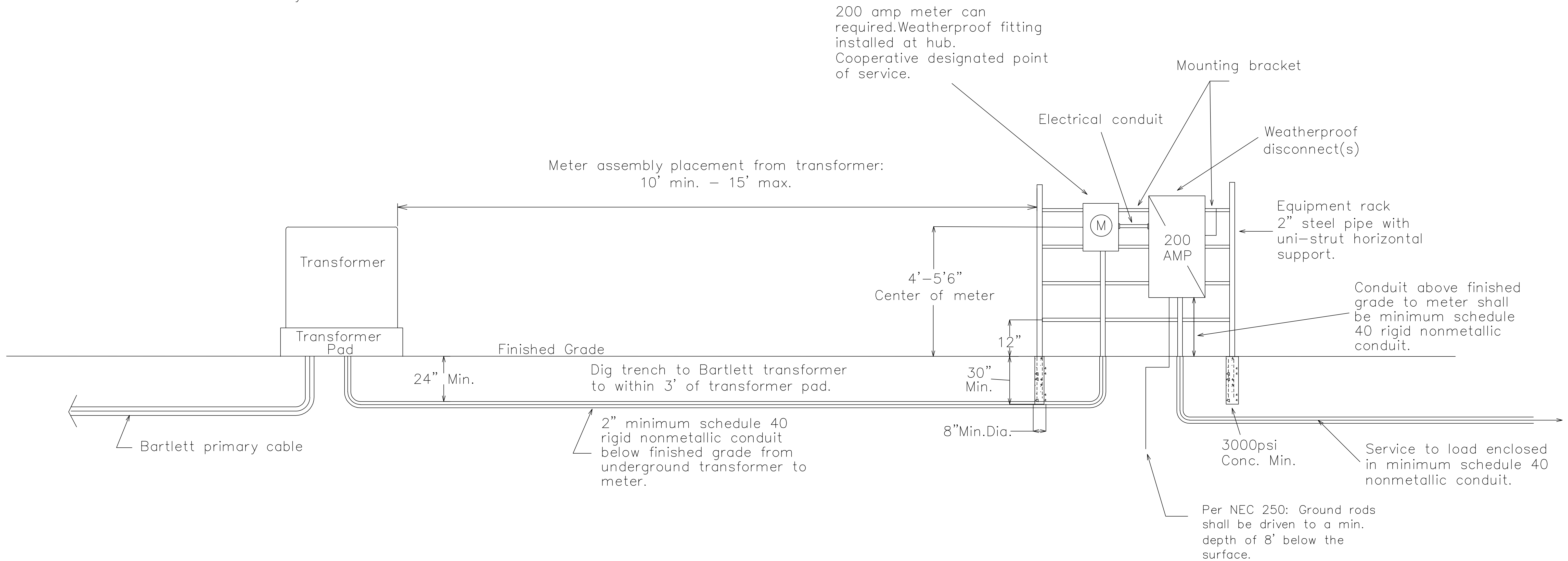


NOTES:

1. Weatherproof fittings required.
2. Wire sized to total disconnect size.
3. Neutral may only be reduced one size on residential application. No reduction of the neutral is allowed on commercial application.
4. Member shall notify Bartlett Electric Cooperative office when meter assembly is complete.
5. Bartlett will install conduit and wire from transformer into meter assembly.



FOR THE MEMBER'S SAFETY,  
WIRING INSTALLATIONS SHALL  
CONFORM TO THE REQUIREMENTS  
OF THE NEC AND NESC.

RESIDENTIAL

URD #5



27492 HWY 95  
BARTLETT, TEXAS 76511

SINGLE PHASE, 200A URD SERVICE ON RACK WITH CLASS 200A METER SOCKET.

DRAWN BY: SEP	BEC POWER APPROVAL: RSL	BEC COMM. APPROVAL:
APPROVAL DATE:	SCALE: NTS	REVISED BY: EMPACT ENG F-21492 03-13-2025