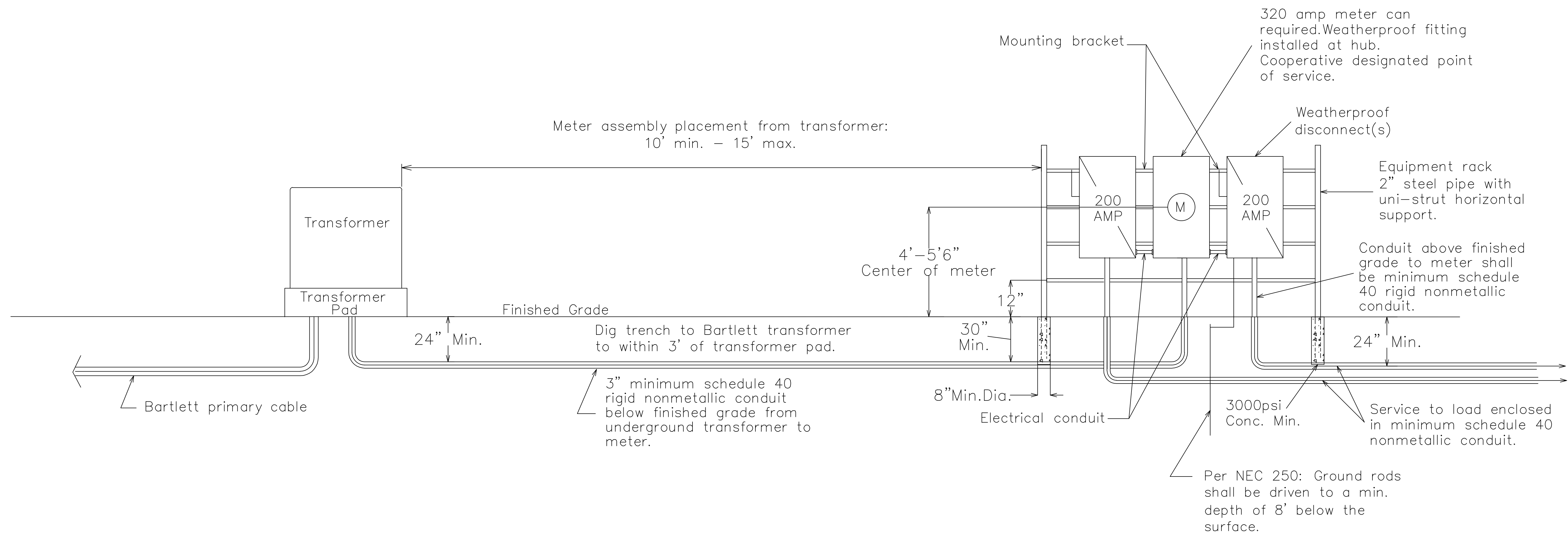


NOTES:

1. Main disconnect panel may not be used as an electrical race way.
2. Weatherproof fittings required.
3. Neutral(s) may only be reduced one size on residential application. No reduction of the neutral(s) is allowed on commercial application.
4. Member shall notify Bartlett Electric Cooperative office when meter assembly is complete.
5. Bartlett will install conduit and wire from transformer into meter assembly.



FOR THE MEMBER'S SAFETY,
WIRING INSTALLATIONS SHALL
CONFORM TO THE REQUIREMENTS
OF THE NEC AND NESC.

RESIDENTIAL

URD #9



27492 HWY 95
BARTLETT, TEXAS 76511

SINGLE PHASE, 320A URD SERVICE ON A RACK WITH CLASS 320A METER SOCKET, 1 OR 2 DISCONNECTS.

DRAWN BY: SEP	BEC POWER APPROVAL: RSL	BEC COMM. APPROVAL:
APPROVAL DATE:	SCALE: NTS	REVISED BY: EMPACT ENG F-21492 03-13-2025